



3860 N. Milwaukee Ave

3BR/3BA End-unit townhouse w/2 car att garage



www.MarkMalave.com

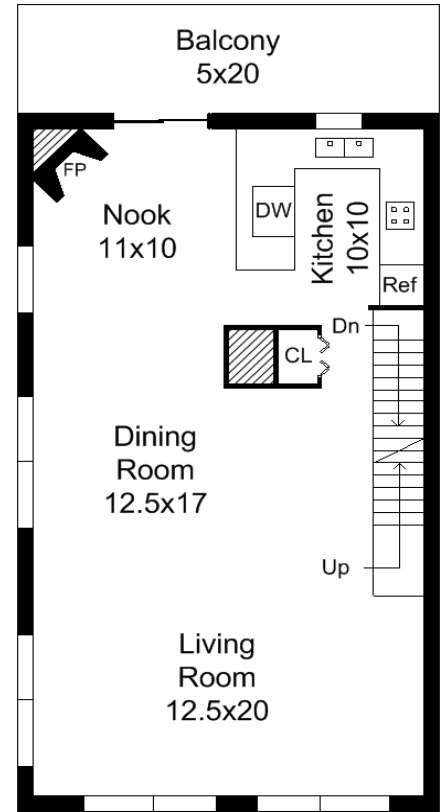
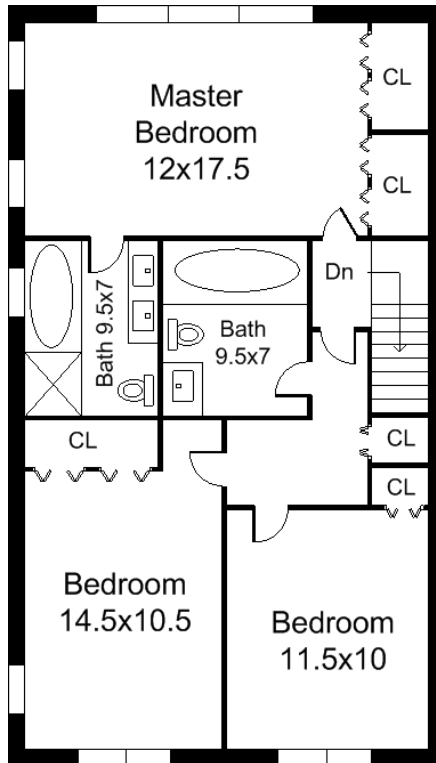
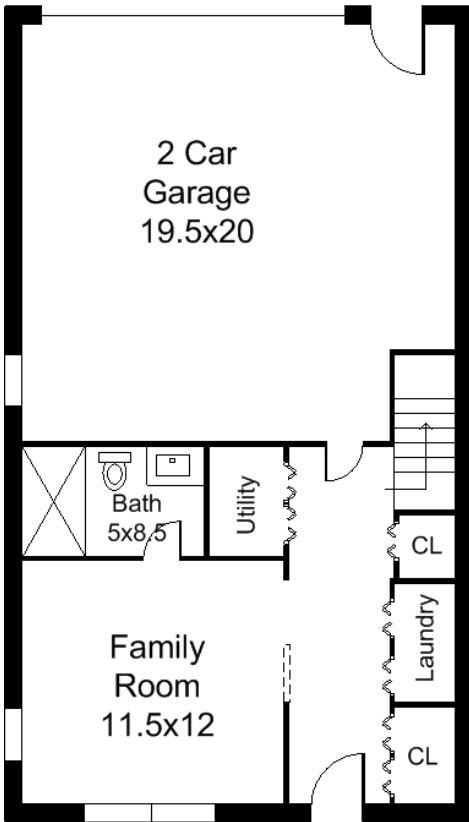
Unit Specifications

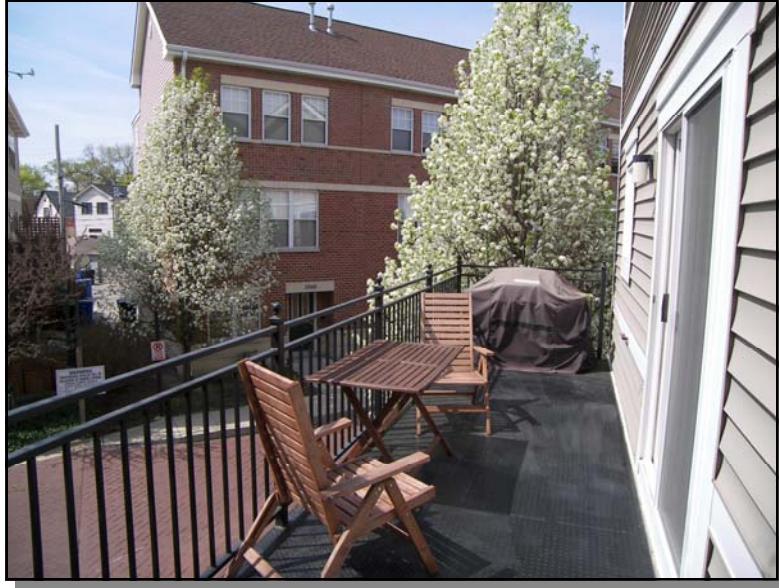
3BR/3BA Fee Simple Townhouse located on large lot

- Bright and Sunny Living Room/Dining Room w/10' Ceilings
- Modern Open Floorplan with hardwood flooring
- Pre-wired for telephone and Cable/Satellite TV
- Dual Zoned Gas Forced-Air Heat/AC
- In-Unit Full sized laundry service
- Master BR located on quiet Hoyne St. w/attached Master Bath
- Granite kitchen with maple hardwood cabinets
- Premium Irving Park location, close to shopping, Metra and “L”
- Gas Fireplace
- Private terrace with courtyard views
- **2 Car Attached Garage**



Spacious 3 Level Open Floor Plan





Offered At: \$369,000

Taxes: \$4100/year

Assessments: \$80/month

View virtual tour and photos: www.MarkMalave.com

MARK MALAVE

Direct– 773-435-1605

Fax– 773-435-1605

m.malave@comcast.net

www.MarkMalave.com



All specifications, features, designs, price and materials are subject to change without notice. Room dimensions are approximate and vary depending on residence selected. Depicted floor plans and architectural renderings are only an artist's impression and are not guaranteed.